



# CHORAL AND ROCK-OUT

1e TROMBONE C  
(POSAUNE I)

## 1. Choral

Medium slow (♩ = 72)

**A** 8.



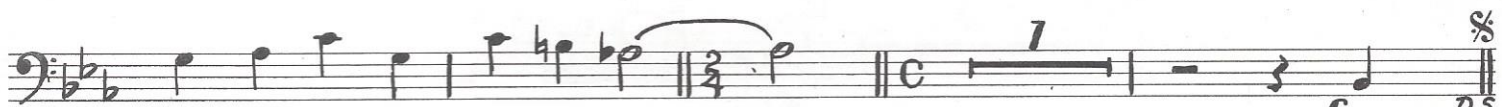
al Coda



**B**



**C**



D.S. al Coda



## 2. Rock out

Medium rock

♩ = 120 (steady)

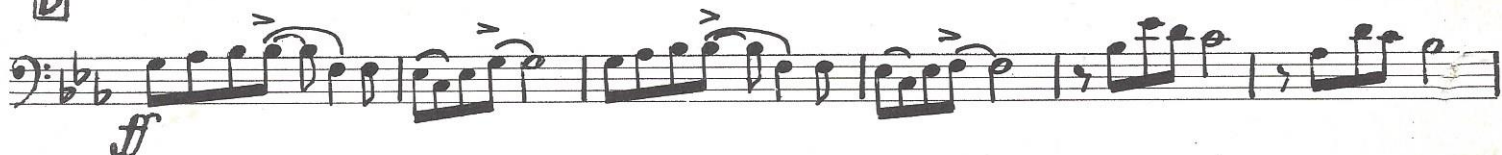
**A**

**B**

**C**



**D**



**E**



1<sup>re</sup> Trombone C Posaune I U<sup>2</sup>

First staff of music in bass clef, key signature of two flats (B-flat and E-flat). It contains a melodic line with various ornaments and accents.

Second staff of music in bass clef, key signature of two flats. It begins with a dynamic marking of *ff* and a tempo marking of *marc* enclosed in a box. The melody continues with eighth and sixteenth notes.

Third staff of music in bass clef, key signature of two flats. It features a steady melodic line with eighth notes.

Fourth staff of music in bass clef, key signature of two flats. The melody continues with eighth notes and some rests.

Fifth staff of music in bass clef, key signature of two flats. It contains two triplet markings (indicated by the number '3' above the notes) and a dynamic marking of *f*. A box containing the letter 'I' is placed above the staff.

Sixth staff of music in bass clef, key signature of two flats. It continues the melodic line with eighth notes and a dynamic marking of *f*. A box containing the letter 'J' is placed above the staff.

Seventh staff of music in bass clef, key signature of two flats. It starts with a dynamic marking of *mf* and includes a box containing the letter 'K' above the staff.

Eighth staff of music in bass clef, key signature of two flats. It features a melodic line with eighth notes and a dynamic marking of *ff*. A box containing the letter 'L' is placed above the staff.

Ninth staff of music in bass clef, key signature of two flats. It contains a melodic line with eighth notes and a dynamic marking of *ff*. Boxes containing the letters 'M' and 'N' are placed above the staff.

Tenth and final staff of music in bass clef, key signature of two flats. It includes tempo markings: *rall. poco à poco* and *Largo*. The melody concludes with a final note marked with a fermata.