

10 percussion II
tambourine/maracas/cow bell/
claves/bell tree/cymbals

SOLDIER'S SONG

Jamaican Folk Song

Frede Gines

Werkkopie
Eendracht



$\text{♩} = 72$ Tambourine or maracas



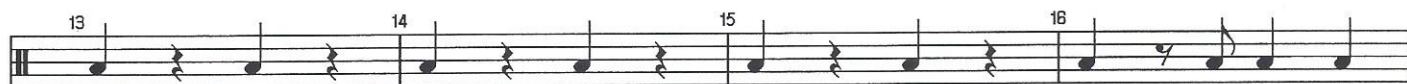
mf



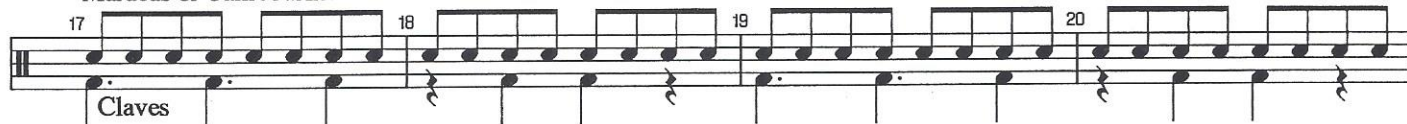
f



mp

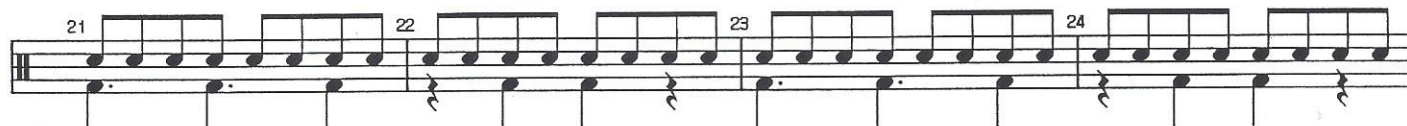


Maracas or Tambourine



Claves

mp



mf (-Claves)



mf

37 38 39 40

f

Maracas or Tambourine

41 42 43 44

Claves
mp

45 46 47 48

49 50 51 52

mf

53 54 55 S.C. 56 57

poco rit... rit... = 88
soft mallets
mf > *p*

58 59 9 68 S.C. 69 70 71 3 S.C. 74 75

p Bell Tree *p* < *mf* *p*

76 = 72 77 7 84 Cow-Bell 85 86

f *mp*

87 88 89 90 91

Maracas or Tambourine

92 93 94 95

Claves
mp

96 97 98 99

10. Perc. II

Soldiers Song

100 101 102 103

mf (-Claves)

Musical staff for measures 100-103, featuring a rhythmic pattern of eighth notes. The dynamic is *mf* (-Claves).

104 105 106 107

Musical staff for measures 104-107, continuing the rhythmic pattern of eighth notes.

108 109 110 111

mf

Musical staff for measures 108-111, continuing the rhythmic pattern of eighth notes. The dynamic is *mf*.

112 113 114 115

f

Musical staff for measures 112-115, continuing the rhythmic pattern of eighth notes. The dynamic is *f*.

Maracas or Tambourine

116 117 118 119

Claves

mp

Musical staff for measures 116-119, featuring a rhythmic pattern of eighth notes. The dynamic is *mp*.

120 121 122 123

Musical staff for measures 120-123, continuing the rhythmic pattern of eighth notes.

124 125 126 127

mf

Musical staff for measures 124-127, continuing the rhythmic pattern of eighth notes. The dynamic is *mf*.

128 129 130 131 132 133

S.C.

mf *f*

Musical staff for measures 128-133, featuring a melodic line with slurs and accents. The dynamic starts at *mf* and increases to *f*.