

Part 3

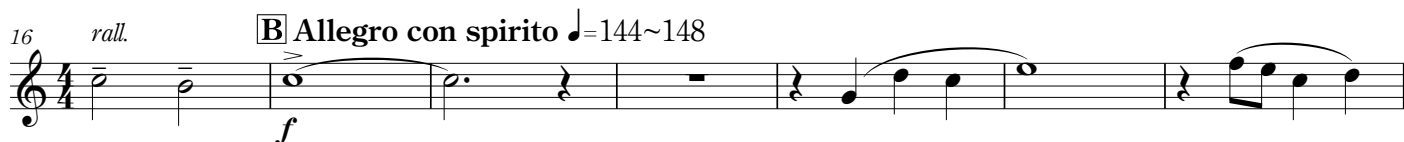
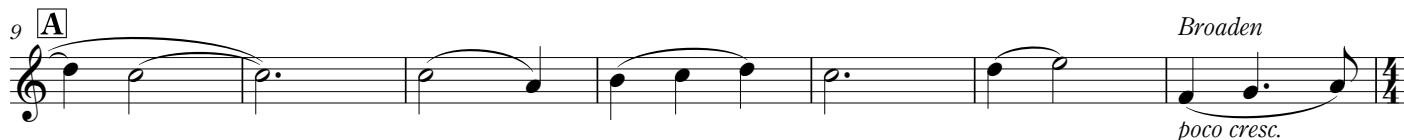
Alto Clarinet in E^b/Alto Saxophone in E^b/Alto Horn in E^b

to Julia

In Seizing the Distant Light

Naoya Wada(2015)

Moderato espressivo ♩=84~88



Part 3
Alto Clarinet in E^b/Alto Saxophone in E^b/Alto Horn in E^b

53

59 **G**

mp

65

div. (↑ notes preceded) **H** *poco rit.*

mf

71 **I** Expressively ♩ = 76~82

mf

78 **J**

85 **K**

f

92 **L**

mp *mf*

100 **M** Dramatic

f

107 **N**

f

Part 3
Alto Clarinet in E^b/Alto Saxophone in E^b/Alto Horn in E^b

117 O

mf

126 P Tempo I ♩=144~148

mp *mf*

133 Q

mf *mf*

139 R

mf

145

151 S div.(↓ notes preceded)

mf

157 T

163 div.(↓ notes preceded)

169 U

f

176 V W

sfz

184 div.(↓ notes preceded)

sfzp *ff*