

B♭ Bass

DAKOTA

Indian Sketches

Jacob de Haan

1. The Great Spirit

Recording on / Aufnahme auf /
Enregistrement sur / Opname op: CD 'MUSIC'

Andante

Musical score for 'The Great Spirit' in G major, 4/4 time. The score consists of three staves. The first staff begins with a treble clef, a key signature of one sharp (F#), and a 4/4 time signature. It features a series of eighth notes with accents, starting with a dynamic marking of *mf*. The second staff continues the melody, marked with a box containing the number 11 and a measure rest of 4 measures. It includes dynamic markings of *mp* and *mf*. The third staff is marked 'Ritenuato' and 'A tempo', starting with a box containing the number 18. It features a series of eighth notes with accents, marked with *f* and *ff*.

2. Buffalo Hunting

Allegro Vivo

Musical score for 'Buffalo Hunting' in G major, 4/4 time. The score consists of six staves. The first staff begins with a treble clef, a key signature of one sharp (F#), and a 4/4 time signature. It features a series of eighth notes with accents, marked with a dynamic of *f*. The second staff continues the melody, marked with a box containing the number 9 and a measure rest of 9 measures. It includes a dynamic marking of *mf*. The third staff continues the melody. The fourth staff is marked with a box containing the number 17 and a measure rest of 17 measures. It includes dynamic markings of *ff* and *mf*. The fifth staff is marked with a box containing the number 25 and a measure rest of 25 measures. It includes dynamic markings of *ff* and *f*. The sixth staff is marked with a box containing the number 32 and a measure rest of 32 measures. It includes dynamic markings of *p* and *f*.

40

p *f* *p* *f* *f* *sfz* *ff*

3. Smoking the Pipe

8

Adagio

mp *mf* *p* *18* *Rit.* *A tempo* *Rit.* *f* *mp*

4. The Ghost Dance

5

Allegretto

mf *13* *f* *21* *mp*

29



Poco rall.

37 **Presto**



46



1. 2.

60



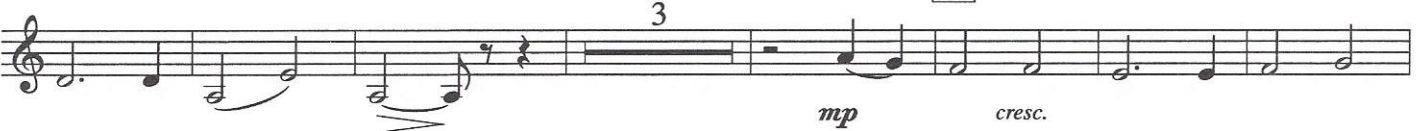
5. Pilgrims at Wounded Knee

Largo Triste

6



14



Rit. 21 **A tempo**

