

marcato

Musical staff with a treble clef and a key signature of one sharp (F#). The tempo is marked *marcato*. The staff contains five groups of triplets, each marked with a '3' below the notes. The final measure of the staff is marked with a dynamic of *f*.

139 Steady Beat ♩ = 92 "Pour Un Flirt"

Musical staff for exercise 139, titled "Steady Beat" with a tempo of ♩ = 92 and the piece name "Pour Un Flirt". The staff contains a series of eighth and sixteenth notes with accents.

147

Musical staff for exercise 147, featuring a sequence of eighth and sixteenth notes with accents.

mf

155

Musical staff for exercise 155, featuring a sequence of eighth and sixteenth notes with accents.

163

Musical staff for exercise 163, featuring a sequence of eighth and sixteenth notes with accents. The staff begins with a dynamic of *f*.

171

Musical staff for exercise 171, featuring a sequence of eighth and sixteenth notes with accents.

179

Musical staff for exercise 179, featuring a sequence of eighth and sixteenth notes with accents.

// 188 Moderately ♩ = 80 "La Vie En Rose"

Molto Rit.

Musical staff for exercise 188, titled "La Vie En Rose" with a tempo of ♩ = 80. The staff begins with a dynamic of *ff* and includes a dynamic change to *mf*. The staff concludes with a double bar line and a key signature change to two flats.

192 A Tempo ♩ = 80

Musical staff for exercise 192, titled "A Tempo" with a tempo of ♩ = 80. The staff begins with a dynamic of *mf cantabile*.

200

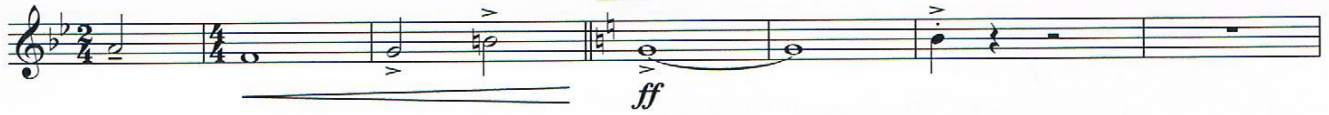
3



208

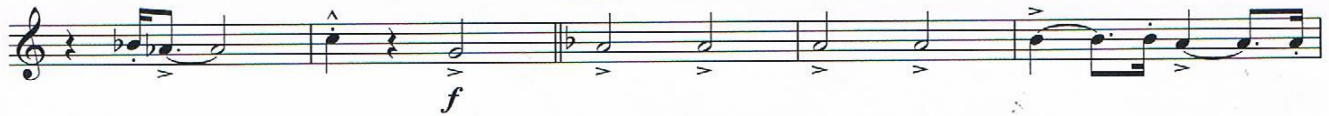


214

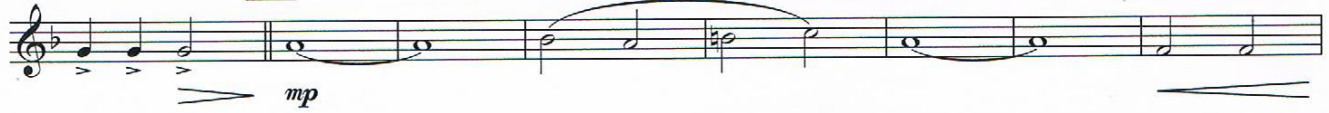


220

Moderately with an easy swing ♩ = 116 "Les Champs-Élysées"



224



232



236

240



244



248

252



3

ff



VIVE LA FRANCE! - Les Plus Grandes Chansons Françaises

Including the most famous French pop songs "La Marseillaise", "Poupée De Cire, Poupée De Son", "Non, Je Ne Regrette Rien", "Et Maintenant", "Pour Un Flirt", "La Vie En Rose" and "Les Champs-Élysées"

B \flat Baritone/Tenorhorn 2

Arranged by Frank Bernaerts

Alla Marcia $\text{♩} = 112$ "La Marseillaise"

Musical notation for the first piece, 'La Marseillaise'. It is in 2/4 time with a tempo of 112. The notation starts with a treble clef and a key signature of one flat. It features a series of eighth and quarter notes with accents and dynamic markings, including a forte (f) dynamic.

Faster $\text{♩} = 152$ [11] "Poupée De Cire, Poupée De Son"

[15]

Musical notation for the second piece, 'Poupée De Cire, Poupée De Son'. It is in 4/4 time with a tempo of 152. The notation starts with a treble clef and a key signature of one flat. It features a series of quarter and eighth notes with accents and dynamic markings, including a mezzo-forte (mf) dynamic.

Musical notation for the second piece, 'Poupée De Cire, Poupée De Son'. It is in 4/4 time with a tempo of 152. The notation starts with a treble clef and a key signature of one flat. It features a series of quarter and eighth notes with accents and dynamic markings, including a mezzo-forte (mf) dynamic.

Musical notation for the second piece, 'Poupée De Cire, Poupée De Son'. It is in 4/4 time with a tempo of 152. The notation starts with a treble clef and a key signature of one flat. It features a series of quarter and eighth notes with accents and dynamic markings, including a mezzo-forte (mf) dynamic.

[31]

[35]

Musical notation for the second piece, 'Poupée De Cire, Poupée De Son'. It is in 4/4 time with a tempo of 152. The notation starts with a treble clef and a key signature of one flat. It features a series of quarter and eighth notes with accents and dynamic markings, including a mezzo-forte (mf) dynamic.

[39]

Musical notation for the second piece, 'Poupée De Cire, Poupée De Son'. It is in 4/4 time with a tempo of 152. The notation starts with a treble clef and a key signature of one flat. It features a series of quarter and eighth notes with accents and dynamic markings, including a mezzo-forte (mf) dynamic.

Musical notation for the second piece, 'Poupée De Cire, Poupée De Son'. It is in 4/4 time with a tempo of 152. The notation starts with a treble clef and a key signature of one flat. It features a series of quarter and eighth notes with accents and dynamic markings, including a mezzo-forte (mf) dynamic.

[49]

Musical notation for the second piece, 'Poupée De Cire, Poupée De Son'. It is in 4/4 time with a tempo of 152. The notation starts with a treble clef and a key signature of one flat. It features a series of quarter and eighth notes with accents and dynamic markings, including a mezzo-forte (mf) dynamic.

Rit.

[57] Moderately $\text{♩} = 80$ "Non, Je Ne Regrette Rien"

Musical notation for the third piece, 'Non, Je Ne Regrette Rien'. It is in 12/8 time with a tempo of 80. The notation starts with a treble clef and a key signature of one flat. It features a series of quarter and eighth notes with accents and dynamic markings, including a fortissimo (ff) dynamic.

[61]

Musical notation for the third piece, 'Non, Je Ne Regrette Rien'. It is in 12/8 time with a tempo of 80. The notation starts with a treble clef and a key signature of one flat. It features a series of quarter and eighth notes with accents and dynamic markings, including a mezzo-forte (mf) dynamic.

mf *espressivo*

Musical notation for the third piece, 'Non, Je Ne Regrette Rien'. It is in 12/8 time with a tempo of 80. The notation starts with a treble clef and a key signature of one flat. It features a series of quarter and eighth notes with accents and dynamic markings, including a forte (f) dynamic.

poco cresc.

Copyright "La Marseillaise" (C. Joseph & R. de Lisle) - "Poupée De Cire, Poupée De Son" (S. Gainsbourg) © 1965 Bagatelle Ed. Mus. Paris -

"Non, Je Ne Regrette Rien" (M. Vaucaire & C. Dumont) © Ed. Barclay/Ed. Altona BV - "Et Maintenant" (G. Bécaud, P. Delanoë & C. Sigman)

© Le Rideau Rouge/Memory Lane Music Ltd. - "Pour Un Flirt" (M. Delpech & R. Vincent) © 1971 Ed. Marouani - "La Vie En Rose"

(L. Louiguy, E. Piaf & M. David) © Les Ed. Musicales Arpege - "Les Champs-Élysées" (M. Wilsh, M. Deighan & P. Delanoë) © 1969 Intersong Basart.

Used by permission of EMI Music Publishing Holland BV & Belgium NV, Warner Basart Music Publishers & BMG Music Publ./Unisong Music Publ.

Authorised edition © 2012 Bernaerts Music BVBA - Music Publishers - Willebroek-Belgium - www.bernaertsmusic.com

2012.0717

69 *mf* *poco cresc.*

77 *f* *mf*

81 *f*

Moderate Bolero Tempo ♩ = 116 "Et Maintenant"

89 3 93 *mf* *mf*

101

109

117 *f* *cresc.*

125 *ff* *eroica*

132

145

152