

# 12 KERSTLIEDEREN

## 1. Eere zij God

MUZIEKVERENIGING  
EENDRACHT  
ASSEN  
Arr. L. BLAAUW



Hobo

ff mf

ff

f

cresc.

ff

mf

x l

mf f

Verv. Hobo.

N. 2 Stille nacht.

3X. l

Handwritten musical notation for the first line of N. 2 Stille nacht. It features a treble clef, a key signature of two flats (B-flat and E-flat), and a 3/4 time signature. The notes are mostly quarter and eighth notes. A handwritten 'p' (piano) dynamic marking is present at the beginning.

Handwritten musical notation for the second line of N. 2 Stille nacht. It continues the melody with a treble clef, two flats, and a 3/4 time signature. A handwritten 'cresc' (crescendo) marking is present. The line ends with a double bar line and a repeat sign.

Handwritten musical notation for the third line of N. 2 Stille nacht. It features a treble clef, a key signature of three flats (B-flat, E-flat, and A-flat), and a 4/4 time signature. The notes are mostly quarter notes. A handwritten 'L' (legato) marking is present.

Handwritten musical notation for the fourth line of N. 2 Stille nacht. It features a treble clef, a key signature of three flats, and a 4/4 time signature. The notes are mostly quarter notes. A handwritten 'cresc' (crescendo) marking is present.

Handwritten musical notation for the fifth line of N. 2 Stille nacht. It features a treble clef, a key signature of three flats, and a 4/4 time signature. The notes are mostly quarter notes. A handwritten 'ff' (fortissimo) dynamic marking is present.

Handwritten musical notation for the sixth line of N. 2 Stille nacht. It features a treble clef, a key signature of three flats, and a 4/4 time signature. The notes are mostly quarter notes. A handwritten 'L' (legato) marking is present.

Handwritten musical notation for the seventh line of N. 2 Stille nacht. It features a treble clef, a key signature of three flats, and a 4/4 time signature. The notes are mostly quarter notes. A handwritten 'cresc' (crescendo) marking is present.

Handwritten musical notation for the eighth line of N. 2 Stille nacht. It features a treble clef, a key signature of three flats, and a 4/4 time signature. The notes are mostly quarter notes. A handwritten 'p' (piano) dynamic marking is present.

Handwritten musical notation for the ninth line of N. 2 Stille nacht. It features a treble clef, a key signature of three flats, and a 4/4 time signature. The notes are mostly quarter notes. A handwritten 'mf' (mezzo-forte) dynamic marking is present.

Nº 3. Daar is uit 's werelds duister wolken

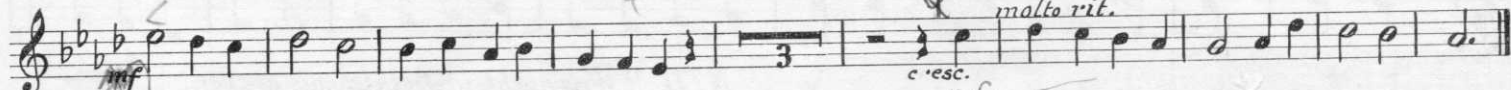
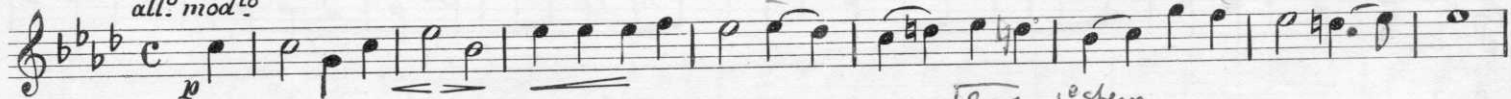
Nº 4. Een roze fris ontloken.

Nº 5. O Kindeke klein.

2e Derv Hobo.

Nº 6. Komt allen te zamen. 3X

*allº modº*



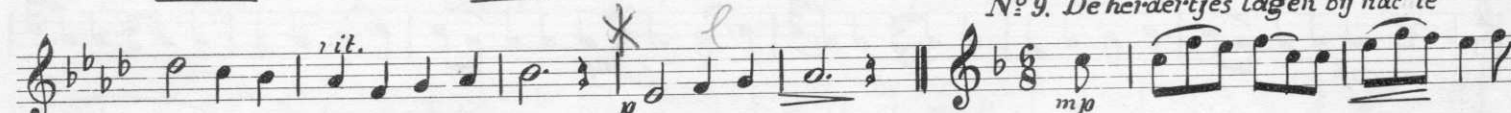
Nº 7. Dol van joracht.

*gedragen.*



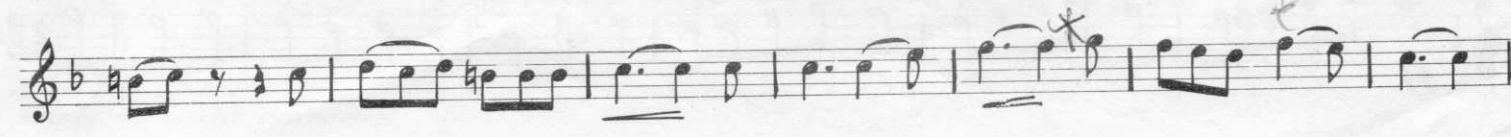
Nº 8. Nu zijt wellekome

*andº*



Nº 9. De herdertjes lagen bij nac te

*mp*



3<sup>e</sup> Derv. Hobo.

N<sup>o</sup> 10. Hoe zal ik U ontvangen.

Two staves of musical notation for N° 10. The first staff is in C major, 4/4 time, with a common time signature. The second staff continues the melody. Both staves feature a 'p' dynamic marking and a 'l' (legato) hairpin.

N<sup>o</sup> 11. 't Was nacht in Bethlehems d'reven.

Three staves of musical notation for N° 11. The first staff is in C major, 4/4 time. The second and third staves are in B-flat major, 3/4 time. The notation includes various dynamics such as 'p' and 'mf', and a 'l' hairpin.

N<sup>o</sup> 12. Gloria in Excelsis. 24

Three staves of musical notation for N° 12. The first staff is in C major, 4/4 time, with a common time signature. The second and third staves continue the melody. Dynamics include 'mf' and 'ff', and there are 'p' and 'l' hairpins.