

# DISNEY'S MAGICAL MARCHES

(A medley including: Supercalifragilisticexpialidocious • Colonel Hathi's March • Mickey Mouse March)

GUITAR

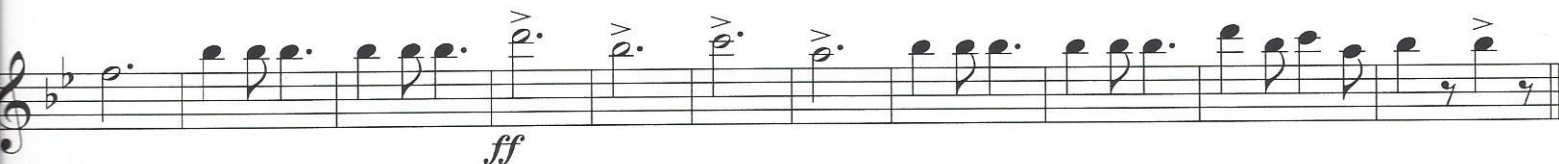
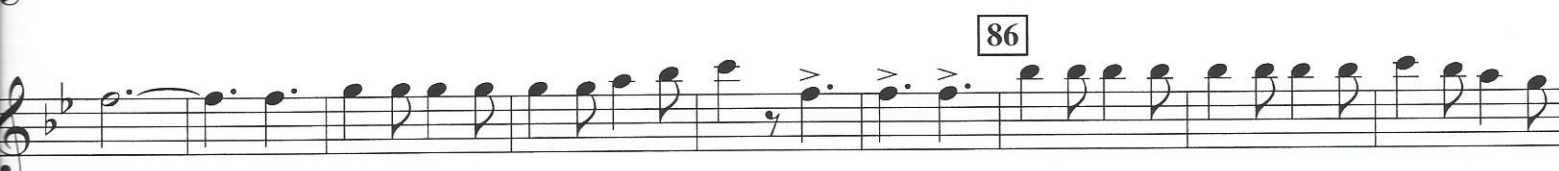
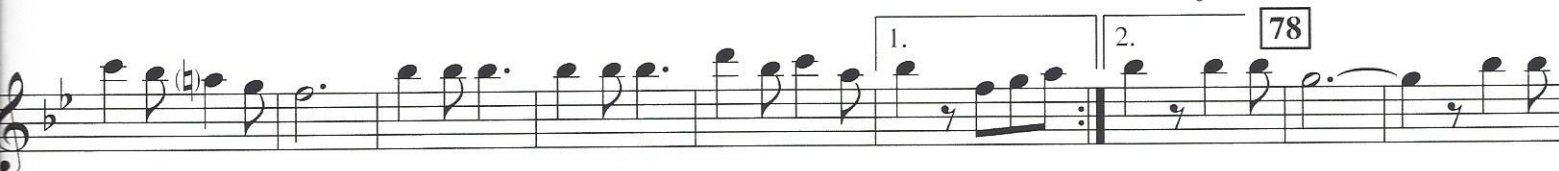
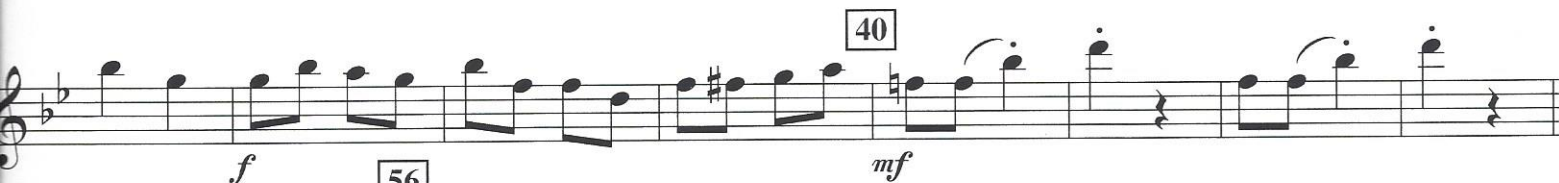
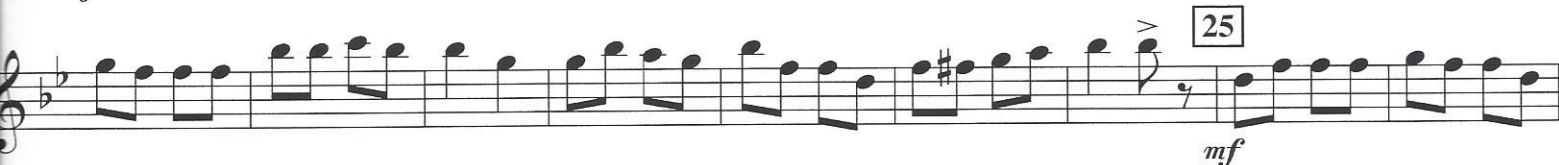
Harmonieorkest  
EENDRACHT  
Assen

Arranged by ERIC OSTERLING

Moderate March tempo



9 "Supercalifragilisticexpialidocious"



SUPERCALIFRAGILISTICEXPALIDOCIOUS  
From Walt Disney's MARY POPPINS  
Words and Music by RICHARD M. SHERMAN and ROBERT B. SHERMAN  
© 1963 Wonderland Music Company, Inc.  
Copyright Renewed  
This arrangement © 2003 Wonderland Music Company, Inc.  
All Rights Reserved Used by Permission

MICKEY MOUSE MARCH  
From Walt Disney's THE MICKEY MOUSE CLUB  
Words and Music by JIMMIE DODD  
© 1955 Walt Disney Music Company  
Copyright Renewed  
This arrangement © 2003 Walt Disney Music Company  
All Rights Reserved Used by Permission

COLONEL HATHI'S MARCH (THE ELEPHANT SONG)  
From Walt Disney's THE JUNGLE BOOK  
Words and Music by RICHARD M. SHERMAN and ROBERT B. SHERMAN  
© 1966 Wonderland Music Company, Inc.  
Copyright Renewed  
This arrangement © 2003 Wonderland Music Company, Inc.  
All Rights Reserved Used by Permission