

Musical staff with a triplet of eighth notes, followed by a half note, and then a series of quarter notes. A dynamic marking *f* is present at the end of the staff.

Steady Beat ♩ = 92 "Pour Un Flirt"

Musical staff starting at measure 139, featuring a series of eighth notes with accents.

Musical staff with a *marc.* marking over a series of eighth notes. Measure numbers 147 and 155 are indicated. A dynamic marking *f* is present.

Musical staff with a *marc.* marking over a series of eighth notes. Measure number 155 is indicated. A dynamic marking *f* is present.

Musical staff with measure number 163. It features a series of eighth notes with accents.

Musical staff with measure number 171. It features a series of eighth notes with accents.

Musical staff with a series of eighth notes, some with accents.

Musical staff with measure number 179. It features a series of eighth notes with accents.

Musical staff ending with a double bar line and a dynamic marking *ff*.

188 Moderately ♩ = 80 "La Vie En Rose"

Musical staff for "La Vie En Rose" starting at measure 188. It features a dynamic marking *mf* and a *Molto Rit.* marking. Measure numbers 192 and 200 are indicated. The staff ends with a double bar line.

A Tempo ♩ = 80

Musical staff with measure numbers 192 and 200. It features a series of eighth notes.

Musical staff with notes and dynamics *mf* and *f*. The staff shows a melodic line with slurs and accents, transitioning from *mf* to *f*.

Musical staff starting at measure 208. It features a melodic line with slurs and accents, continuing the piece.

Musical staff starting at measure 214. It features a melodic line with slurs and accents, including triplet markings (3) and dynamic marking *ff*.

220 Moderately with an easy swing ♩ = 116 "Les Champs-Élysées"

Musical staff starting at measure 220. It features a melodic line with slurs and accents, dynamic marking *f*, and a key signature change to B-flat major.

Musical staff starting at measure 224. It features a melodic line with slurs and accents, dynamic marking *mp*, and a 4-measure rest at the beginning.

Musical staff starting at measure 232. It features a melodic line with slurs and accents, dynamic marking *f*, and triplet markings (3).

Musical staff starting at measure 240. It features a melodic line with slurs and accents, dynamic marking *f*, and triplet markings (3).

Musical staff starting at measure 244. It features a melodic line with slurs and accents, dynamic marking *f*, and triplet markings (3).

Musical staff starting at measure 248. It features a melodic line with slurs and accents, dynamic marking *f*, and triplet markings (3).

Musical staff starting at measure 252. It features a melodic line with slurs and accents, dynamic marking *f*, and triplet markings (3).

Musical staff ending at measure 252. It features a melodic line with slurs and accents, dynamic marking *ff*, and a final chord.

VIVE LA FRANCE! - Les Plus Grandes Chansons Françaises

Including the most famous French pop songs "La Marseillaise", "Poupée De Cire, Poupée De Son",
"Non, Je Ne Regrette Rien", "Et Maintenant", "Pour Un Flirt", "La Vie En Rose" and "Les Champs-Élysées"

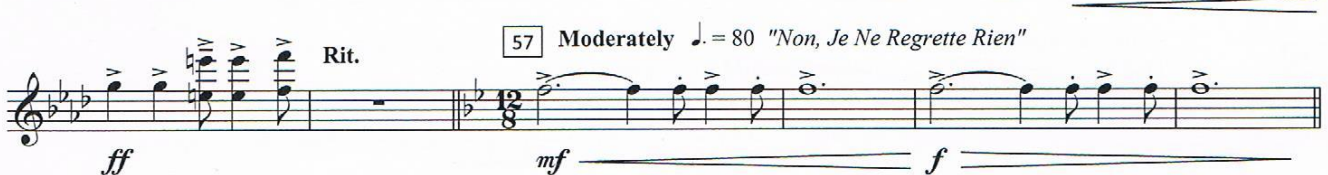
Flute 1,2

Arranged by Frank Bernaerts

Alla Marcia ♩ = 112 "La Marseillaise"



Faster ♩ = 152 [11] "Poupée De Cire, Poupée De Son"



Copyright "La Marseillaise" (C. Joseph & R. de Lisle) - "Poupée De Cire, Poupée De Son" (S. Gainsbourg) © 1965 Bagatelle Ed. Mus. Paris -
"Non, Je Ne Regrette Rien" (M. Vaucaire & C. Dumont) © Ed. Barclay/Ed. Altona BV - "Et Maintenant" (G. Bécaud, P. Delanoë & C. Sigman)
© Le Rideau Rouge/Memory Lane Music Ltd. - "Pour Un Flirt" (M. Delpech & R. Vincent) © 1971 Ed. Marouani - "La Vie En Rose"
(L. Louiguy, E. Piaf & M. David) © Les Ed. Musicales Arpege - "Les Champs-Élysées" (M. Wilsh, M. Deighan & P. Delanoë) © 1969 Intersong Basart.
Used by permission of EMI Music Publishing Holland BV & Belgium NV, Warner Basart Music Publishers & BMG Music Publ./Unisong Music Publ.
Authorised edition © 2012 Bernaerts Music BVBA - Music Publishers - Willebroek-Belgium - www.bernaertsmusic.com

2012.0717

61 6 69

mf *f* *mf*

poco cresc.

77

f *mf*

81

f

f

Moderate Bolero Tempo ♩ = 116 "Et Maintenant"

89 93 101 8 8

109

mf

117

f

cresc. *ff* *eroica*

125

f