

Bass B♭

# 120 HYMNS for BRASS BAND

COMPILED AND ARRANGED BY

**The Music Editor**



WRIGHT & ROUND, LTD.

Gloucester.

1. ABERYSTWYTH *Andante moderato* Joseph Parry  
 mp *c c † A s bes c c † † g A s bes A s g † c f g A s g † A s bes. c c † c † o s A s bes c c †*

*cresc.* *f* *p*  
*des A s des c bes A s Es A s f c † Es A s g c des des c A s † des c A s bes A s g † A s bes c c †*

2. ABRIDGE *Moderato* Isaac Smith  
 mf *F F A c bes. A E F c f d e † g c e † g bes. a e † bes a g † c e bes a f a bes. e e †*

3. ANGELUS *Moderato* G. Joseph  
 p *Es Es d. Es d. c f bes bes A A s g c d Es † f bes bes A s g † s s A s A s g g c bes Es A s bes bes Es.*

4. AURELIA *Moderato* S.S. Wesley  
 mp *cresc.* *mf* *dim.* *p*

5. AUSTRIAN HYMN *Andante moderato* Haydn  
 mp *p* *mp* *f* *mp*

6. BELMONT *Andante* Arranged from W. Gardiner's 'Sacred Melodies'  
 p *cresc.* *mf* *p* *cresc.* *mf*



7. **BLAENWERN** *Moderato* W.P. Rowlands

*mf* *es es es es es t e des es bes bes es es es des es es t es es des es.*

*mf* *es t es des es es e bes es t bes es des bes e es t es es e des bes es t des es es*

*cresc.* *f* *mf*

By permission of T.H. Rowlands

8. **CARLISLE** *Allegro moderato* Charles Lockhart

*mf* *es d e bes e t es d e bes e e t bes A g e bes A d e bes. A d bes e t*

*f* *ff*

9. **CHRIST THE KING** *Allegro moderato* Rev. C.W. Rigby

*mf* *Es t bes A g t Es d d g bes d Es t bes bes A g f t Es d.*

*mf* *REFRAIN* *d Es t f bes Es d d c t bes A g g f Es c t Es d d Es c t f bes bes.*

*mf a tempo* *cresc.* *f* *allarg.* *pochiss. rall.*

Copyright by permission of the composer and The Catholic Truth Society (Liverpool Diocesan Branch)

10. **COLNE** *Andante* F. Duckworth

*mp* *es es es bes bes bes es d e bes bes bes es es e e es es as as as bes bes es*

*mf*

Copyright used by permission of F.C. Duckworth.

11. **COR JESU** *Andante moderato* Traditional

*mp* *es es es es es es t bes es* *1* *es t bes es* *2* *f f f f bes bes bes e bes es g as g es*

*mp* *d e bes es es es t g es A es bes bes bes es es t g as g as as a bes bes es*

## 12 CORPUS CHRISTI

Traditional

Moderato

mf mp mf

Detailed description: This musical score is for 'CORPUS CHRISTI', a traditional piece. It is written in 3/4 time with a key signature of one flat (B-flat). The tempo is 'Moderato'. The melody is written on a single staff. It begins with a mezzo-forte (mf) dynamic, moves to mezzo-piano (mp) in the middle, and returns to mezzo-forte (mf) towards the end. The piece concludes with a fermata over the final note.

## 13 CRIMOND

Melody by Jessie Seymour Irvine

Moderato

mf cresc. f

Detailed description: This musical score is for 'CRIMOND', with a melody by Jessie Seymour Irvine. It is in 3/4 time with a key signature of one flat. The tempo is 'Moderato'. The dynamics start at mezzo-forte (mf), increase through a crescendo (cresc.) to forte (f) by the end of the piece.

## 14 CROSS OF JESUS

from 'The Crucifixion' by John Stainer

Andante moderato

p cresc. mf

Detailed description: This musical score is for 'CROSS OF JESUS', from 'The Crucifixion' by John Stainer. It is in 3/4 time with a key signature of one flat. The tempo is 'Andante moderato'. The dynamics begin at piano (p), go through a crescendo (cresc.) to mezzo-forte (mf) at the end.

## 15 DARWALL'S 148th.

J. Darwall

Allegro moderato

mf cresc. f mf cresc. f

Detailed description: This musical score is for 'DARWALL'S 148th.' by J. Darwall. It is in 3/4 time with a key signature of one flat. The tempo is 'Allegro moderato'. The dynamics start at mezzo-forte (mf), increase through a crescendo (cresc.) to forte (f), then decrease through another crescendo (mf cresc.) back to forte (f) at the end.

## 16. DAY OF REST

J.W. Elliot

Allegro moderato

mf mp

Detailed description: This musical score is for 'DAY OF REST' by J.W. Elliot. It is in 3/4 time with a key signature of one flat. The tempo is 'Allegro moderato'. The dynamics start at mezzo-forte (mf) and move to mezzo-piano (mp) towards the end.

Copyright by permission of Novello and Company Ltd.

## 17 DENNIS

Andante

p mf

Detailed description: This musical score is for 'DENNIS'. It is in 3/4 time with a key signature of one flat. The tempo is 'Andante'. The dynamics start at piano (p) and move to mezzo-forte (mf) towards the end.



## 18. DIADEM

Maestoso

James Elkor

mf p mf mp

mf cresc. f

## 19. DIADEMATA

Moderato

Sir George J. Elvey

mf cresc. f

## 20. DIVINE MYSTERIES

Moderato

F. Stanfield

mp mf mp

By kind permission of Burns and Oates Ltd.

## 21. DIX

Moderato

C. Kocher

mf f

## 22. DOMINUS REGIT ME

Moderato

J.B. Dyken

mf

## 23. DUKE STREET

Allegro

attributed to J. Hatton

mf cresc. f

## 24. DUNDEE (French)

Andante moderato

Scottish Psalter

mp

25. EASTER HYMN  
Jubiloso

'Lynn Davatica' 1708.

Musical score for 'Easter Hymn' in G major, 4/4 time. The piece is marked 'Jubiloso'. The first staff begins with a mezzo-forte (*mf*) dynamic. The melody features a series of eighth notes, with some measures containing beamed eighth notes. The second staff continues the melody, with dynamics ranging from *mf* to *f*. The piece concludes with a final cadence.

26. EIN FESTE BURG  
Con signita

Martin Luther.

Musical score for 'Ein feste Burg' in G major, 4/4 time. The piece is marked 'Con signita'. The first staff begins with a mezzo-forte (*mf*) dynamic. The melody is characterized by a steady eighth-note rhythm. The second staff continues the melody, with dynamics ranging from *mf* to mezzo-piano (*mp*). The piece concludes with a final cadence.

27. ELIACOMBE  
Allegro

'Wartenburg Gesangbuch' 1784.

Musical score for 'Eliacombe' in G major, 4/4 time. The piece is marked 'Allegro'. The first staff begins with a forte (*f*) dynamic. The melody features a series of eighth notes, with some measures containing beamed eighth notes. The second staff continues the melody, with dynamics ranging from *f* to mezzo-forte (*mf*). The piece concludes with a final cadence.

28. ELLERS  
Moderato

E.J. Hopkins.

Musical score for 'Ellers' in G major, 4/4 time. The piece is marked 'Moderato'. The first staff begins with a mezzo-piano (*mp*) dynamic. The melody features a series of eighth notes, with some measures containing beamed eighth notes. The second staff continues the melody, with dynamics ranging from *mp* to mezzo-forte (*mf*). The piece concludes with a final cadence.

29. EVENTIDE  
Moderato

W.H. Monk.

Musical score for 'Eventide' in G major, 4/4 time. The piece is marked 'Moderato'. The first staff begins with a piano (*p*) dynamic. The melody features a series of eighth notes, with some measures containing beamed eighth notes. The second staff continues the melody, with dynamics ranging from *p* to mezzo-forte (*mf*). The piece concludes with a final cadence.

30. FRANCONIA  
Moderato

W.H. Havergal: founded on a melody from 'Kings Choralbook' 1736.

Musical score for 'Franconia' in G major, 4/4 time. The piece is marked 'Moderato'. The first staff begins with a mezzo-forte (*mf*) dynamic. The melody features a series of eighth notes, with some measures containing beamed eighth notes. The second staff continues the melody, with dynamics ranging from *mf* to mezzo-forte (*mf*). The piece concludes with a final cadence.



## 31. GEIBEL

Allegro moderato

Adam Geibel



## 32. GERONTIUS

Moderato

J.B. Dykes



## 33. GOPSAL

Allegro

Handel



## 34. HANOVER

Maestoso

W. Croft



## 35. HOLLINGSIDE

Andante

J.B. Dykes



## 36. HORSLEY

Moderato

W. Horsley



## 37. HURSLEY

P. Ritter.

**Andante**

*mp* *cresc.* *mf*

38. HYFRYDOL  
**Moderato**

R.H. Prichard.

*mp* *mf* *mp* *cresc.* *f*

## 39. INNOCENTS

**Semplice**

'Parish Choir' 1850.

*p* *mp* *cresc.* *f*

## 40. KOCHER

**Allegro moderato**

J.H. Knecht.

*mp* *f*

## 41. LAUDATE DOMINUM

**Maestoso**

Sir. Hubert Parry

*f* *mf* *cresc.* *f*

Copyright by permission of Novello and Company Ltd.

## 42. LAUDES DOMINI

**Allegro moderato**

Joseph Barnby.

*mp* *mf* *mp* *f*



## 43. LLOYD

Cuthbert Howard.



Copyright by permission of Geo. Taylor, The Cross Printing Works, Stainland.

44. LOBE DEN HERREN  
Moderato

J. Cruger

45. LOVE DIVINE  
Moderato

Sir John Stainer.

46. LUX BENIGNA  
Andante con moto

J. B. Dykes.

47. MAIDSTONE  
Moderato

W. B. Gilbert.



Copyright by permission of Novello and Company Ltd.

48. MANNHEIM  
Moderato

F. Filtz.



## 49. MARTYRDOM

H. Wilson



## 50. MARYTON

H. Percy Smith.



## 51. MELCOMBE

S. Webbe



## 52. MELITA

J. B. Dykes



## 53. MILES LANE

W. Shrubsole.



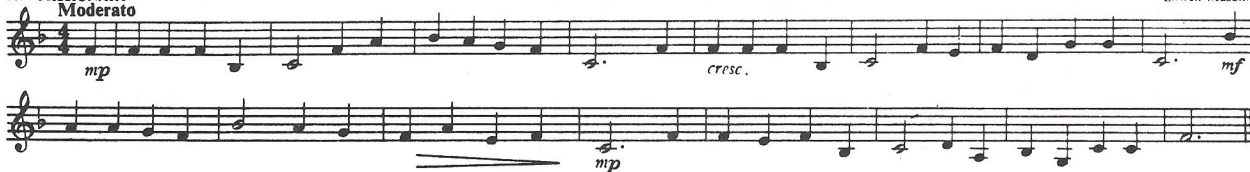
## 54. MISERICORDIA

Henry Smart



## 55. MISSIONARY

Liswell Mason.





## 56. MONKLAND

Moderato

adapted J. Wilkes



## 57. MONKS GATE

Allegro con spirito

English Traditional adapted R. Vaughan Williams



This tune from ENGLISH HYMNAL is copyright and has been arranged for Brass Band by permission of the Oxford University Press

## 58. MORNING HYMN

Moderato

F.H. Barthelemon



## 59. MORNING LIGHT

Allegro

G.J. Webb



## 60. MOSCOW

Moderato

F. Giardini



## 61. NATIONAL ANTHEM

Maestoso



## 62. NEARER, MY GOD, TO THEE

Moderato

*p* *mf* *p*

1 2

Detailed description: This musical score is for the hymn 'Nearer, My God, to Thee'. It is in 3/4 time and G major. The tempo is 'Moderato'. The piece begins with a piano (*p*) dynamic and features a first ending (marked '1') and a second ending (marked '2'). The dynamics fluctuate, reaching a mezzo-forte (*mf*) in the middle and returning to piano (*p*) at the end.

## 63. NICEÆ

Moderato

*mf* *cresc.* *f*

J.B. Dykes

Detailed description: This musical score is for the hymn 'Niceæ'. It is in 3/4 time and G major. The tempo is 'Moderato'. The piece starts with a mezzo-forte (*mf*) dynamic and includes a crescendo (*cresc.*) leading to a forte (*f*) dynamic. It is attributed to J.B. Dykes.

## 64. NOTTINGHAM (MOZART)

Andante

*p* *cresc.* *mf*

Mozart from 12th. Mass

Detailed description: This musical score is for the hymn 'Nottingham' by Mozart. It is in 3/4 time and G major. The tempo is 'Andante'. The piece begins with a piano (*p*) dynamic and features a crescendo (*cresc.*) leading to a mezzo-forte (*mf*) dynamic. It is noted as being from Mozart's 12th Mass.

## 65. NUN DANKET

Allegro maestoso

*f* *cresc.* *f* *mf*

J. Cruger

Detailed description: This musical score is for the hymn 'Nun Danket'. It is in 3/4 time and G major. The tempo is 'Allegro maestoso'. The piece starts with a forte (*f*) dynamic, includes a crescendo (*cresc.*) to another forte (*f*), and ends with a mezzo-forte (*mf*) dynamic. It is attributed to J. Cruger.

## 66. OLD HUNDRETH

Maestoso

*f*

L. Bourgeois

Detailed description: This musical score is for the hymn 'Old Hundred'. It is in 3/4 time and G major. The tempo is 'Maestoso'. The piece begins with a forte (*f*) dynamic. It is attributed to L. Bourgeois.

## 67. PASSION CHORALE

Espressivo

*p* *mf*

Hans L. Hassler

Detailed description: This musical score is for the hymn 'Passion Chorale'. It is in 3/4 time and G major. The tempo is 'Espressivo'. The piece starts with a piano (*p*) dynamic and reaches a mezzo-forte (*mf*) dynamic. It is attributed to Hans L. Hassler.



## 68. PENLAN

Moderato

D. Jenkins

*mp* *cresc.* *mf*

Copyright by permission of Snell and Sons Ltd. Swansea

## 69. PENTECOST

Allegro moderato

W. Boyd

*mf*

Copyright by permission of Novello and Company Ltd.

## 70. PILGRIMS

Allegro

Henry Smart

*mp* *mf*

## 71. PRAISE, MY SOUL

Moderato

Sir John Goss

*mf* *cresc.* *f* *dim.* *f* *mf* *f*

V. 1-3 V. 4

72. REDHEAD  
Moderato

R. Redhead

73. REGENT SQUARE  
Allegro moderato

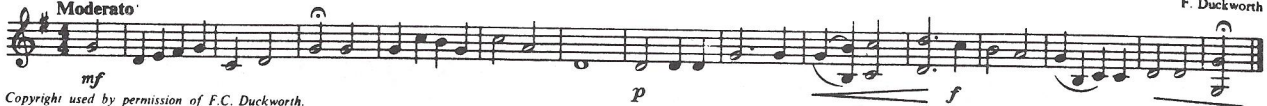
H. Smart

74. RICHMOND  
Moderato

Thomas Haweis

75. RIMINGTON  
Moderato

F. Duckworth



Copyright used by permission of F.C. Duckworth.

76. ROCKINGHAM  
Andante

E. Miller

77. ST. AGNES  
Moderato

J.B. Dykes

78. ST. ALBINUS  
Allegro moderato

H J Gauntlett



## 79. ST. ANN

w. Croft

**Con dignita**

*mf* A - men

## 80. ST. BEES

J.B. Dykes

**Andante**

*p*

## 81. ST. CECILIA

L.C. Hayne

**Moderato**

*mp*

## 82. ST. CLEMENT

C.C. Scholefield

**Tranquillo**

*p* *cresc.* *mf dim.*

## 83. ST. COLUMBA

Ancient Irish Hymn

**Moderato**

*mf* *f* *dim.*

## 84. ST. CUTHBERT

J.B. Dykes

**Andante**

*p*

## 85. ST. DENIO

Welsh Hymn

**Moderato**

*mf*



## 86. ST. ETHELWALD

Moderato

W.H. Monk



## 87. ST. FRANCIS

Allegro moderato

'Lass' uns Erfreuen' 1623.



## 88. ST. GEORGE

Moderato

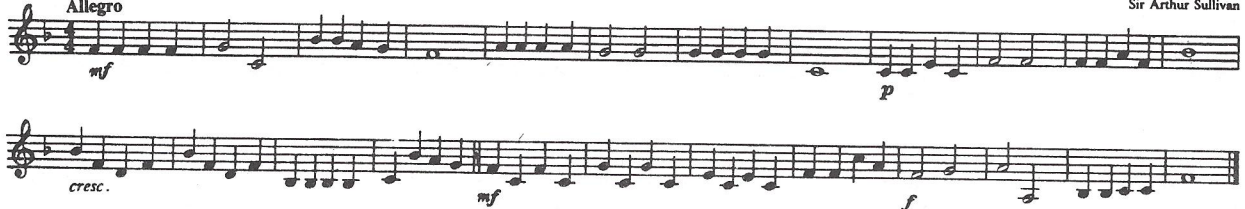
Sir George J. Elvey



## 89. ST. GERTRUDE

Allegro

Sir Arthur Sullivan



## 90. ST. MAGNUS

Moderato

Jeremiah Clarke



## 91. ST. MICHAEL

Moderato

attributed to L. Bourgeois



## 92. ST. OSWALD

Andante moderato

J. B. Dykes



## 93. ST. PETER

Moderato

A. R. Reinagle



## 94. ST. THEODULPH

Maestoso

M. Tachner



## 95. ST. THERESA

Allegro

Sir Arthur Sullivan



## 96. SAMUEL

Moderato

Sir Arthur Sullivan



## 97. SANDON

Andante

C. H. Purday

Musical notation for Sandon, Andante. The piece begins with a piano (*p*) dynamic and features a crescendo (*cresc.*) leading to a mezzo-forte (*mf*) dynamic. The melody is written on a single staff in treble clef with a key signature of one sharp (F#).

## 98. SAWSTON

Moderato

Traditional

Musical notation for Sawston, Moderato. The piece starts with a mezzo-forte (*mf*) dynamic and includes a mezzo-piano (*mp*) dynamic. It features a crescendo (*cresc.*) and is written on a single staff in treble clef with a key signature of two flats (Bb, Eb).

## 99. SINE NOMINE

Moderato

R. Vaughan Williams

VERSES 1, 2, 3, 7 &amp; 8.

Musical notation for Sine Nomine, Moderato. The piece begins with a mezzo-forte (*mf*) dynamic and includes a crescendo (*cresc.*). It features a section labeled 'After last verse' with dynamics *f*, *A*, *men*, and *mf*, followed by 'VERSES 4, 5 & 6' with a dynamic of *f*. The notation is on a single staff in treble clef with a key signature of two flats (Bb, Eb).

This tune from the ENGLISH HYMNAL is copyright and has been arranged for Brass Band by permission of the Oxford University Press

## 100. STELLA

Moderato

H. F. Hemy

Musical notation for Stella, Moderato. The piece is marked with a mezzo-piano (*mp*) dynamic and includes a crescendo (*cresc.*) leading to a mezzo-forte (*mf*) dynamic. It features two first endings, labeled 1 and 2, and is written on a single staff in treble clef with a key signature of two flats (Bb, Eb).

## 101. STRACATHRO

Moderato

Charles Hutcheson

Musical notation for Stracathro, Moderato. The piece begins with a mezzo-piano (*mp*) dynamic and concludes with a mezzo-forte (*mf*) dynamic followed by a decrescendo (*dim.*). It is written on a single staff in treble clef with a key signature of one sharp (F#).



102. STUTTGART  
Moderato

C.F. Witt

103. TALLIS' CANON  
Andante

Thomas Tallis

104. TURRIS DAVIDICA  
Moderato

H.F. Henry

105. VICTORY  
Moderato

Paicstrina

106. VOX DILECTI  
Andante

J.B. Dykes

107. WAREHAM  
Andante

W. Knapp



## 108. WARRINGTON

Ralph Harrison



## 109. WESTMINSTER

James Turle



## 110. WHEN HE COMETH

**Semplice**

## 111. WHITBURN

H. Baker

**Andante**

## 112. WILTSHIRE

Sir George Smart

**Moderato**

## 113. WIR PFLÜGEN (DRESDEN)

Johann A.P. Schulz

**Allegro**

## CHRISTMAS SECTION

114. ADESTE FIDELES

**Moderato**

J.F. Wade

Musical score for "Adeste Fideles" in G major, 2/4 time. The score consists of two staves. The first staff begins with a treble clef, a key signature of one sharp (F#), and a 2/4 time signature. The tempo is marked "Moderato". The first measure is marked *mf*. A note in the first measure is marked with a small circle and the text "(Small notes v.l. only)". The second measure contains a triplet of eighth notes marked with a "3" above them. The piece concludes with a double bar line and repeat dots.

115. AWAY IN A MANGER

**Moderato**

W.J. Kirkpatrick

Musical score for "Away in a Manger" in G major, 2/4 time. The score consists of one staff. The tempo is marked "Moderato". The piece begins with a treble clef, a key signature of one sharp (F#), and a 2/4 time signature. The first measure is marked *mp*. The piece concludes with a double bar line and repeat dots.

116. HARK! THE HERALD ANGELS

**Allegro**Mendelssohn  
adapted by W.H. Cummings

Musical score for "Hark! The Herald Angels" in G major, 2/4 time. The score consists of two staves. The tempo is marked "Allegro". The first measure is marked *mf*. The piece concludes with a double bar line and repeat dots.

Copyright By permission of Novello and Company Ltd.

117. IRBY

**Andante**

H.J. Gauntlett

Musical score for "Irby" in G major, 2/4 time. The score consists of one staff. The tempo is marked "Andante". The piece begins with a treble clef, a key signature of one sharp (F#), and a 2/4 time signature. The first measure is marked *mp*. The piece concludes with a double bar line and repeat dots.

118. NOWELL

**Allegro**

Traditional

Musical score for "Nowell" in G major, 2/4 time. The score consists of one staff. The tempo is marked "Allegro". The piece begins with a treble clef, a key signature of one sharp (F#), and a 2/4 time signature. The first measure is marked *mf*. The piece concludes with a double bar line and repeat dots.

119. STILLE NACHT

**Andante**

F. Gruber

Musical score for "Stille Nacht" in G major, 2/4 time. The score consists of one staff. The tempo is marked "Andante". The piece begins with a treble clef, a key signature of one sharp (F#), and a 2/4 time signature. The first measure is marked *p*. The piece concludes with a double bar line and repeat dots.

120. WINCHESTER OLD

**Moderato**

Este Psalms 1592

Musical score for "Winchester Old" in G major, 2/4 time. The score consists of one staff. The tempo is marked "Moderato". The piece begins with a treble clef, a key signature of one sharp (F#), and a 2/4 time signature. The first measure is marked *mp*. The piece concludes with a double bar line and repeat dots.