

A CHRISTMAS CELEBRATION

Including : *The Twelve Days Of Christmas, See Amid The Winters Snow, Deck The Halls, Hark! The Herald Angels Sing, Coventry Carol, Masters In The Hall, Gloria In Excelsis Deo & We Wish You A Merry Christmas*

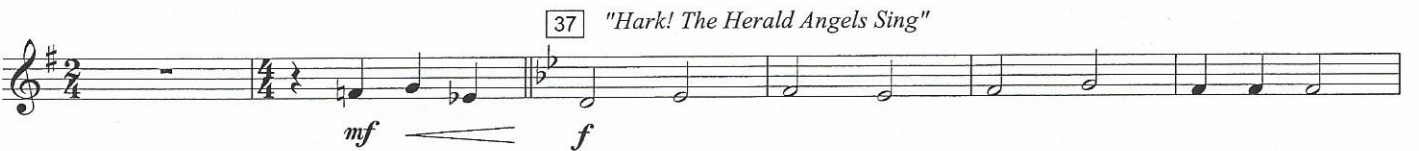
B \flat Clarinet 3

Arranged by Darrol Barry

Moderato $\text{♩} = 128$ "The Twelve Days Of Christmas"



11 "See Amid The Winter's Snow"



57 "Coventry Carol"

Musical notation for measures 57-63 of "Coventry Carol". The piece is in B-flat major and 3/4 time. It begins with a treble clef and a key signature of two flats. The melody consists of quarter and eighth notes. A dynamic marking of *mp* (mezzo-piano) is placed below the staff. A hairpin crescendo symbol is shown below the staff, starting at measure 57 and ending at measure 63.

64

Musical notation for measures 64-70 of "Coventry Carol". Measure 64 is a whole rest. Measure 65 contains a four-measure rest. The piece continues with quarter notes in measures 66-70. A dynamic marking of *p cresc.* (piano crescendo) is placed below the staff. A hairpin crescendo symbol is shown below the staff, starting at measure 64 and ending at measure 70. A tempo marking of *♩ = ♩.* is placed above the staff.

71 "Masters In This Hall"

Musical notation for measures 71-78 of "Masters In This Hall". The piece is in B-flat major and 4/4 time. It begins with a treble clef and a key signature of two flats. The melody features eighth and sixteenth notes with accents. A dynamic marking of *f* (forte) is placed below the staff.

Musical notation for measures 79-82 of "Masters In This Hall". The melody continues with eighth and sixteenth notes, including some beamed sixteenth notes. A dynamic marking of *ff* (fortissimo) is placed below the staff.

79

Musical notation for measures 83-87 of "Masters In This Hall". The piece changes to 4/4 time. The melody consists of quarter and eighth notes. A dynamic marking of *ff* is placed below the staff. A hairpin crescendo symbol is shown below the staff, starting at measure 79 and ending at measure 87.

83 "Gloria In Excelsis Deo"

Musical notation for measures 83-87 of "Gloria In Excelsis Deo". The piece is in B-flat major and 4/4 time. It begins with a treble clef and a key signature of two flats. The melody consists of quarter and eighth notes. A dynamic marking of *f* is placed below the staff.

87

Musical notation for measures 88-92 of "Gloria In Excelsis Deo". The melody continues with quarter and eighth notes. A dynamic marking of *f* is placed below the staff.

93

Musical notation for measures 93-99 of "Gloria In Excelsis Deo". The piece changes to 3/4 time. The melody consists of quarter and eighth notes. A dynamic marking of *f* is placed below the staff.

100 "We Wish You A Merry Christmas"

Musical notation for measures 100-107 of "We Wish You A Merry Christmas". The piece is in B major and 3/4 time. It begins with a treble clef and a key signature of one sharp. The melody consists of quarter and eighth notes.

108

Musical notation for measures 108-114 of "We Wish You A Merry Christmas". The piece changes to 4/4 time. The melody consists of quarter and eighth notes. A dynamic marking of *ff* is placed below the staff. A hairpin crescendo symbol is shown below the staff, starting at measure 108 and ending at measure 114.